

ElectroTM

PRICE LIST
W. E. F : 01-01-2021

OXYGEN FREE HIGH CONDUCTIVITY COPPER



CABLE TERMINAL END / CONNECTORS
CABLE GLANDS / CRIMPING TOOLS



NSIC
CERTIFIED CO.



We also
Registered
with

MSME
सूक्ष्म एवं मध्यम उद्यम
MICRO, SMALL & MEDIUM ENTERPRISES

Deluxe Electricals

Crimping Lugs & Cable Terminal

END SEALING FERRULES



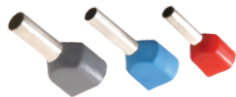
mm ²	CAT No.	PRICE EACH	mm ²	CAT No.	PRICE EACH
0.50	EH-508	0.61	6-10	EH-518	1.14
0.75-6	EH-509	0.61	6-12	EH-519	1.21
1-6	EH-510	0.61	6-15	EH-520	1.35
1-10	EH-511	0.78	10-12	EH-521	1.51
1.5-7	EH-512	0.78	10-15	EH-522	1.67
1.5-10	EH-513	0.83	10-18	EH-523	1.82
2.5-7	EH-514	0.78	16-12	EH-524	1.67
2.5-12	EH-515	0.90	16-15	EH-525	1.82
4.90	EH-516	0.90	16-18	EH-526	1.97
4-12	EH-517	1.07			

END SEALING FERRULES (INSULATED)



mm ²	CAT No.	PRICE EACH	COLOUR
0.5-8	EHI-508	0.82	WHITE
0.75-8	EHI-509	0.82	BLUE
1.0-6	EHI-510	0.89	RED
1.0-10	EHI-511	1.00	RED
1.5-10	EHI-513	1.00	BLACK
2.5-8	EHI-514	1.00	GREY
2.5-12	EHI-515	1.10	GREY
4.0-12	EHI-517	1.42	ORANGE
6.0-12	EHI-519	1.73	
10-12	EHI-521	2.00	
16-15	EHI-525	3.36	

TWIN TYPE LUGS



mm ²	CAT No.	PRICE EACH	COLOUR
0.5	8	2.02	WHITE
0.5	10	2.09	WHITE
0.75	8	2.02	GREY
0.75	10	2.09	GREY
1.0	8	2.17	RED
1.0	10	2.25	RED
1.5	8	2.17	BLACK
1.5	10	2.25	BLACK
2.5	8	2.45	BLUE
2.5	10	2.51	BLUE
4.0	12	2.97	GREY
6.0	12	2.97	YELLOW
10.0	14	5.78	RED
16.0	14	6.56	BLUE

RING TYPE SPECIAL



mm ²	CAT No.	PRICE EACH	mm ²	CAT No.	PRICE EACH
1.5-8	SPL RING	2.70	10-20	SPL RING	14.70
4.6-16	SPL RING	12.80	10-24	SPL RING	14.90
4.6-20	SPL RING	13.00	16-16	SPL RING	16.30
4.6-24	SPL RING	13.25	16-20	SPL RING	16.50
10-16	SPL RING	14.30	16-24	SPL RING	16.70

COPPER TUBE TERMINAL LIGHT DUTY (BS-4579)



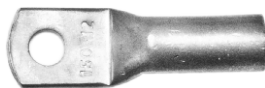
2.5-5	Eus-05	4.70	120-12	Eus-22	94.00
4-6	Eus-06	6.60	120-16	Eus-23	94.00
6-6	Eus-07	7.30	150-10	Eus-24	133.00
10-6	Eus-08	9.10	150-12	Eus-25	133.00
16-6	Eus-09	12.00	150-16	Eus-26	133.00
25-6	Eus-10	19.80	185-12	Eus-27	196.00
35-6	Eus-11	22.00	185-16	Eus-28	196.00
35-8	Eus-12	22.00	225-16	Eus-231	244.00
50-6	Eus-13	29.00	240-16	Eus-29	275.00
50-8	Eus-14	29.00	240-20	Eus-30	275.00
50-10	Eus-15	29.00	300-16	Eus-31	396.00
70-8	Eus-16	51.00	300-20	Eus-32	396.00
70-10	Eus-17	51.00	400-20	Eus-33	545.00
70-12	Eus-18	51.00	500-20	Eus-34	715.00
95-10	Eus-19	70.00	630-20	Eus-35	1004.00
95-12	Eus-20	70.00	800	Eus-62	1722.00
120-10	Eus-21	94.00	1000	Eus-76	3722.00

COPPER TUBE TERMINAL HEAVY DUTY BS-4579



mm ²	CAT No.	PRICE EACH	mm ²	CAT No.	PRICE EACH
1.5-5	Eus-538	5.80	50-10	Eus-556	46.00
1.5-6	Eus-539	6.10	70-10	Eus-558	75.00
2.5-5	Eus-540	6.10	70-8	Eus-557	75.00
2.5-6	Eus-541	6.40	70-13	Eus-559	75.00
2.5-4	Eus-388	6.40	95-10	Eus-359	107.00
4-5	Eus-389	7.40	95-13	Eus-561	107.00
4-6	Eus-543	7.40	120-17	Eus-546	146.00
6-6	Eus-544	9.50	120-18	Eus-241	146.00
6-8	Eus-545	9.50	150-13	Eus-242	190.00
6-5	Eus-390	8.60	150-17	Eus-564	176.00
10-6	Eus-353	10.10	185-17	Eus-243	250.00
10-8	Eus-547	10.80	240-17	Eus-244	369.00
16-8	Eus-549	13.80	240-21	Eus-567	369.00
16-6	Eus-354	12.40	300-17	Eus-245	539.00
20-8	Eus-550	14.60	300-21	Eus-569	539.00
25-6	Eus-355	21.00	400-17	Eus-246	847.00
25-8	Eus-551	21.00	400-21	Eus-571	847.00
25-10	Eus-552	21.00	500-21	Eus-247	1156.00
35-8	Eus-356	28.00	550-21	Eus-573	1416.00
35-6	Eus-542	28.00	630-21	Eus-248	1735.00
35-10	Eus-554	29.00	800	Eus-599	2893.00
50-8	Eus-357	46.00	1000	Eus-590	4054.00

COPPER TUBE TERMINAL (BS-4579) HEAVY DUTY LONG BARREL



25-8	Eus-282	24.00	185-12	Eus-289	386.00
35-8	Eus-283	37.00	240-16	Eus-290	542.00
50-8	Eus-284	63.00	300-16	Eus-291	693.00
70-10	Eus-285	96.00	400-20	Eus-292	1069.00
95-12	Eus-286	151.00	400-21	Eus-293	1877.00
120-12	Eus-287	216.00	630-21	Eus-294	2581.00
150-12	Eus-288	266.00			

COPPER RING FORK *U-CUT) TERMINAL



mm ²	CAT No.	PRICE EACH	mm ²	CAT No.	PRICE EACH
1.5-3.6	ERF-7240	2.40	4.6-5.1	ERF-7246	5.24
2.5-3.6	ERF-7863	2.55	10.0-6.0	ERF-7867	8.98

COPPER REDUCER TERMINALS



mm ²	CAT No.	PRICE EACH	mm ²	CAT No.	PRICE EACH
2.5	WPC-1	14.70	95.0	WPC-29	138.00
2.5	WPC-7	13.30	95.0	WPC-8	197.00
4.0	WPC-15	14.70	95.0	WPC-31	127.00
4.0	WPC-16	13.30	95.0	WPC-32	204.00
6.0	WPC-17	15.60	120.0	WPC-33	168.00
6.0	WPC-18	13.30	120.0	WPC-34	167.00
10.0	WPC-19	18.40	120.0	WPC-35	194.00
10.0	WPC-20	16.70	120.0	WPC-36	261.00
10.0	WPC-21	21.00	150.0	WPC-10	305.00
10.0	WPC-22	18.90	150.0	WPC-37	237.00
16.0	WPC-23	36.00	185.0	WPC-30	389.00
16.0	WPC-24	36.00	185.0	WPC-38	311.00
16.0	WPC-2	26.00	225.0	WPC-39	510.00
25.0	WPC-25	42.00	225.0	WPC-46	702.00
25.0	WPC-3	56.00	225.0	WPC-42	648.00
35.0	Wpc-4	55.00	240.0	WPC-44	668.00
50.0	Wpc-26	62.00	240.0	WPC-43	488.00
50.0	WPC-5	140.00	300.0	WPC-45	618.00
70.0	WPC-27	95.00	300.0	WPC-47	661.00
70.0	WPC-6	146.00	400.0	WPC-101	1398.00
70.0	WPC-28	144.00			

COPPER TUBE ERMINALS TWO HOLES (BS-4579)



25	Eus-509	52.21	185	Eus-516	585.99
35	Eus-510	77.45	240	Eus-517	610.94
50	Eus-511	113.44	300	Eus-518	617.17
70	Eus-512	159.27	400	Eus-519	610.94
95	Eus-513	171.06	500	Eus-520	654.56
120	Eus-514	190.26	630	Eus-521	916.38
150	Eus-515	314.15			

Electro™



HEAT SHRINKABLE TUBE



NYLON CABLE TIES

ALUMINIUM IN LINE CONNECTORS



mm ²	CAT No.	PRICE EACH	mm ²	CAT No.	PRICE EACH
2.5	ALS-6	1.50	150	ALS-10	25.00
4	ALS-5	1.70	185	ALS-11	33.00
6	ALS-13	1.80	225	ALS-147	50.00
10	ALS-14	2.00	240	ALS-16	52.00
16	ALS-4	2.60	300	ALS-17	77.00
25	ALS-3	4.40	400	ALS-18	116.00
35	ALS-2	4.60	500	ALS-19	187.00
50	ALS-12	7.70	630	ALS-20	222.00
70	ALS-1	12.10	800	ALS-148	307.00
95	ALS-15	14.30	1000	ALS-149	539.00
120	ALS-9	22.00			

ALUMINUM TUBE TERMINALS



mm ²	CAT No.	PRICE EACH	mm ²	CAT No.	PRICE EACH
2.5-3	Als-151	1.90	70-12	Als-226	15.40
2.5-3	Als-309	1.90	95-10	Als-227	16.50
4-4	Als-155	2.00	95-12	Als-228	16.50
4-5	Als-317	2.00	95-16	Als-229	16.50
6-5	Als-158	2.20	120-10	Als-257	23.00
6-6	Als-313	2.30	120-12	Als-230	23.00
10-6	Als-214	2.80	120-16	Als-231	23.00
10-8	Als-215	2.80	150-10	Als-258	30.00
10-8	Als-159	2.80	150-12	Als-232	30.00
16-6	Als-252	4.00	150-16	Als-233	30.00
16-8	Als-216	4.00	185-10	Als-311	37.00
16-10	Als-217	4.00	185-12	Als-234	37.00
25-8	Als-218	5.50	185-16	Als-235	37.00
25-10	Als-219	5.50	225-12	Als-320	53.00
25-12	Als-220	5.50	240-12	Als-236	64.00
25-12	Als-253	5.50	240-16	Als-237	64.00
35-6	Als-254	6.60	300-16	Als-300	90.00
35-8	Als-221	6.60	300-20	Als-259	90.00
35-10	Als-222	6.60	400-20	Als-260	130.00
50-8	Als-255	9.90	500-20	Als-296	198.00
50-10	Als-312	9.90	630-20	Als-261	252.00
50-12	Als-224	9.90	800	Als-318	407.00
70-8	Als-356	15.40	1000	Als-319	594.00
70-10	Als-225	15.40			

ALUMINIUM TUBE TERMINALS LONG BARREL



mm ²	CAT No.	PRICE EACH	mm ²	CAT No.	PRICE EACH
2.5-3	ALS-551	2.80	95-10	ALS-527	19.80
2.5-3	ALS-509	2.80	95-12	ALS-528	19.80
4,-4	ALS-555	2.80	95-16	ALS-529	19.80
4,-5	ALS-517	2.80	120-10	ALS-557	30.00
6,-5	ALS-558	3.10	120-12	ALS-530	30.00
6,-6	ALS-513	3.10	120-16	ALS-531	30.00
10,-4	ALS-514	3.70	150-10	ALS-658	36.00
10,-6	ALS-515	3.70	150-12	ALS-532	36.00
16,-6	ALS-552	4.80	150-16	ALS-533	36.00
16,-8	ALS-516	4.80	185-10	ALS-511	46.00
16,-10	ALS-617	4.80	185-12	ALS-534	46.00
25,-8	ALS-518	5.50	185-16	ALS-535	46.00
25,-10	ALS-519	5.50	225-12	ALS-620	64.00
25,-12	ALS-520	5.50	240-12	ALS-536	77.00
35-8	ALS-521	7.70	240-16	ALS-537	77.00
35-10	ALS-522	7.70	300-16	ALS-500	113.00
50-8	ALS-655	12.10	300-20	ALS-559	113.00
50-10	ALS-512	12.10	400-20	ALS-560	157.00
50-12	ALS-524	12.10	500-20	ALS-596	249.00
70-8	ALS-556	18.70	630-20	ALS-561	326.00
70-10	ALS-525	18.70	800	ALS-618	490.00
70-12	ALS-526	18.70	1000	ALS-619	710.00

CLOSE AND CONNECTORS



SIZE	PRICE EACH
CE 1	1.00
CE 2	1.00
CE 5	1.60
CE 8	2.64

PG-CABLE GLANDS



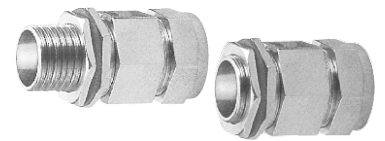
ITEN NO.	THREAD LENGTH (MM)	CABLE RANGE (MM)	HOLE SIZE (MM)	PRICE EACH
EPG-7	8	3-6.5	12.50	4.00
EPG-7	12	3-6.5	12.50	6.00
EPG-7	15	3-6.5	12.50	7.00
EPG-9	8	4-8	15.00	5.00
EPG-9	12	4-8	15.00	7.00
EPG-9	15	4-8	15.00	8.00
EPG-11	8	5-10	18.50	6.00
EPG-11	15	5-10	18.50	7.00
EPG-13.5	8	6-12	20.50	6.80
EPG-13.5	15	6-12	20.50	8.00
EPG-16	8	10-14	22.00	8.70
EPG-19	10	12-15	24.00	10.50
EPG-21	12	13-18	28.50	13.50
EPG-25	12	16-21	30.00	16.50
EPG-29	12	18-25	37.00	22.00
EPG-36	15	22-32	47.00	42.00
EPG-42	18	32-38	54.00	53.00
EPG-48	18	34-44	60.00	66.00
EPG-63	30	42-50	70.00	120.00

SINGLE COMPRESSION (SIEMENS) BRASS CABLE GLAND



SQ. mm x CORE mm	SIZE (INCH)	SIZE (mm)	Price (pcs.)
1.5 x 2	3/8"	10	35.00
1.5 x 2	1/2"	12	36.00
2.5 x 2	5/8"	16	35.00
1.5x4, 1.5x5-6-7, 2.5x4	3/4"	19	43.00
4 x 4, 4 x 3, 4 x 6	7/8"	22	54.00
2.5 x 10 -12, 10 x 4	1"	25	69.00
16 x 3-4	1 1/8"	28	119.00
25x3 1/2 - 4, 35x3 1/2 - 4	1 1/4"	32	138.00
50 x 3 1/2 - 4	1 3/8"	35	182.00
70 x 3 1/2, 95 x 3	1 1/2"	38	199.00
95 x 3 1/2, 120 x 3 1/2	1 3/4"	45	251.00
150 x 3 1/2, 185 x 3	2"	50	312.00
185 x 3 1/2	2 1/4"	57	395.00
240 x 3,	2 1/2"	63	486.00
300 x 3 - 3 1/2	2 3/4"	72	560.00
400 x 3	3"	75	676.00
400 x 3 1/2	3 1/4"	82	723.00
500 x 3 1/2	3 1/2"	88	1159.00

DOUBLE COMPRESSION BRASS CABLE GLAND



CODE	SIZE (mm)	Price (pcs.)
DE 01 SS	3/8"	143.00
DE 01 S	1/2"	143.00
DE 01 A	5/8"	178.00
DE 01		194.00
DE 02	1"	292.00
DE 03		298.00
DE 04	1-1/8"	392.00
DE 05	1-1/4"	478.00
DE 06	1-1/2"	773.00
DE 07		813.00
DE 08		1125.00
DE 09		1318.00
DE 010		1620.00
DE 011		1944.00
DE 012		2187.00
DE 013		2997.00
DE 014		3267.00
DE 015		4495.00

PRICE LIST W.E.F : 01/01/2021 | PRICES ARE SUBJECT TO CHANGE WITHOUT NOTICE | GST 18% APPLICABLE (HSN CODE : 8535)

Deluxe Electricals

Crimping Lugs & Cable Terminal

Electro™

FACTORY : Unit No. 14, Phase - III, Parmar Techno Centre, Vasai Phata, W.E. Highway, Vasai (East), Thane-401208. (India)
 Mobile : +91 9819790586 | +91 9819790813
 Email : deluxe_elect@rediffmail.com | kailash.electro91@gmail.com
 Website : www.electrolugs.com

Authorised Distributor :